

Cafflano® Klassic



All-in-one
Pour-over
Coffee
Maker

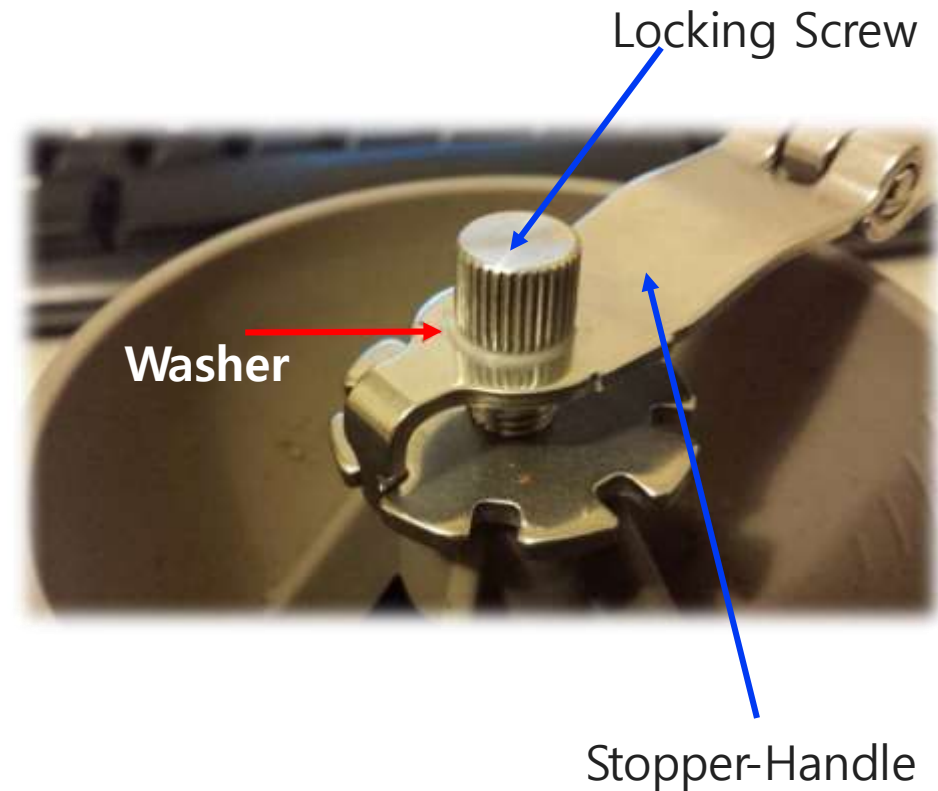
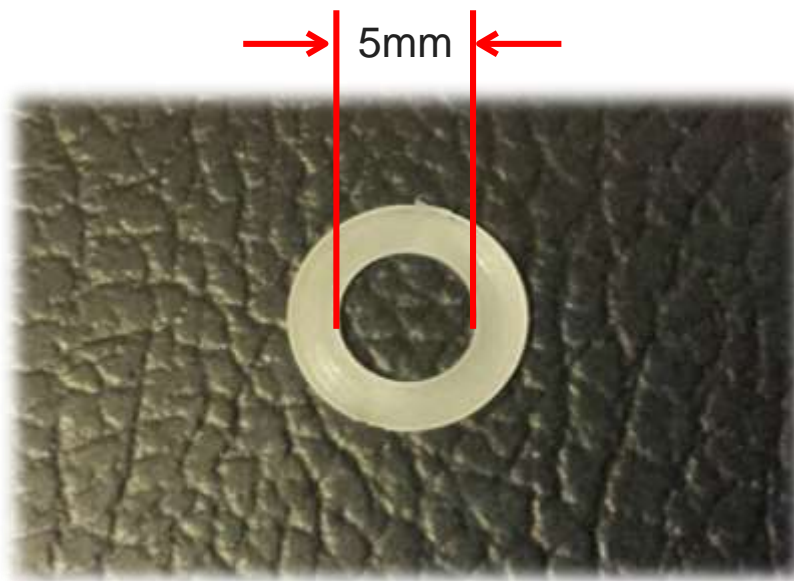
User Tips



Click  @CafflanoKlassic

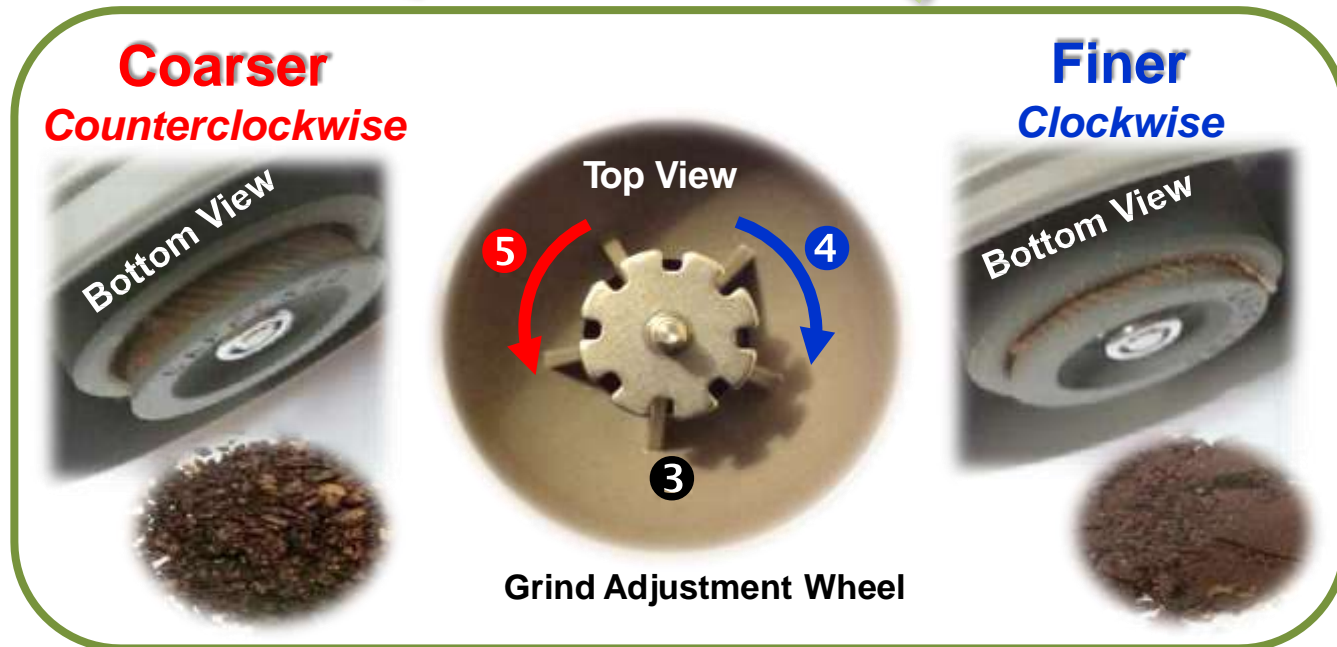
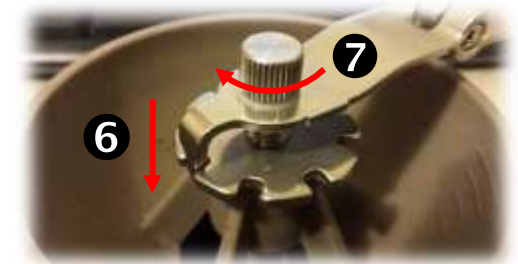
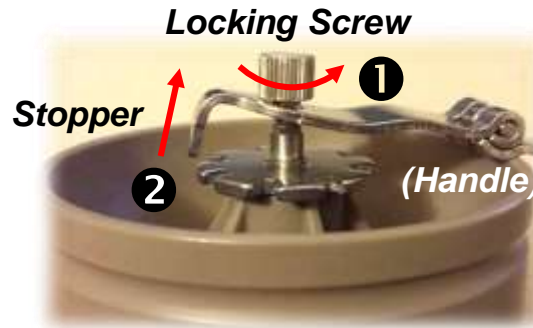
Washer

- Use any washer (metal or plastic) with 5mm of inner hole diameter when it's being missed. This washer helps soft lock between the Locking Screw & Stopper-Handle. It's recommended to make the screw tighten before use as Cafflano KLASSIC is supposed to be rattled on-the-go. This is normal and shouldn't be an issue as the grinder setting is very often.



Adjusting Grind Size

- ❶ Turn the **Locking Screw** counterclockwise a halfway (not take out but leave it)
- ❷ Lift the **Stopper** from the notch of grind adjustment wheel
- ❸ Turn the **Grind Adjustment Wheel** to the desired grind level.
 - ❹ Turn clockwise to make the grind finer.
 - ❺ Turn counterclockwise to make it coarser
- ❻ Lock the **Grind Adjustment Wheel** with the Stopper of grinder handle
- ❼ Turn **Locking Screw** back completely (clockwise)



Easy Grinding

- Easier grinding with Drip Kettle
 - Lower the center of gravity
- Easier grinding position
 - Between legs
 - On belly
 - In the air

Grinding on Tumbler



Grinding on Drip Kettle



Grinding between legs



Grinding on belly



Grinding in the Air



How to utilize Drip Kettle

- Be cautious when hot water to be poured using Drip Kettle
- Leave boiling water in the electric kettle for 10-20 seconds to lower the temperature for perfect pour-over coffee (around at 90 degC)
- Keep holding the top sides with thumb and index (or middle) fingers and the bottom with a little finger



How to utilize the Lid

- Find the **Lid** on top of Drip Kettle



- Disassemble the **Lid** from Drip Kettle (unscrew counterclockwise)



How to utilize the Lid

- **Lid on top of drip kettle to keep water temperature and prevent water spilled out** : dripping with/without cover (no screw type, but just put on)



Drip without Cover



Drip with Cover

Open cover to allow air in
(when water trapped)

- **Cover as tumbler lid**

– Not sealed but to keep temperature & protect from dust



How to Disassemble Grinder

① Locking Screw (turn counterclockwise)



② Take out stopper-handle



③ Grind Adjustment Wheel (turn counterclockwise)



④ Ceramic burr



How to Assemble Grinder

① Put ceramic burr into the shaft



② Grind adjustment wheel (clockwise)



③ Stopper (Handle)



④ Washer & Locking screw (clockwise)



Washable Cafflano KLASSIC

- All parts including ceramic burr grinder are washable

Grinder

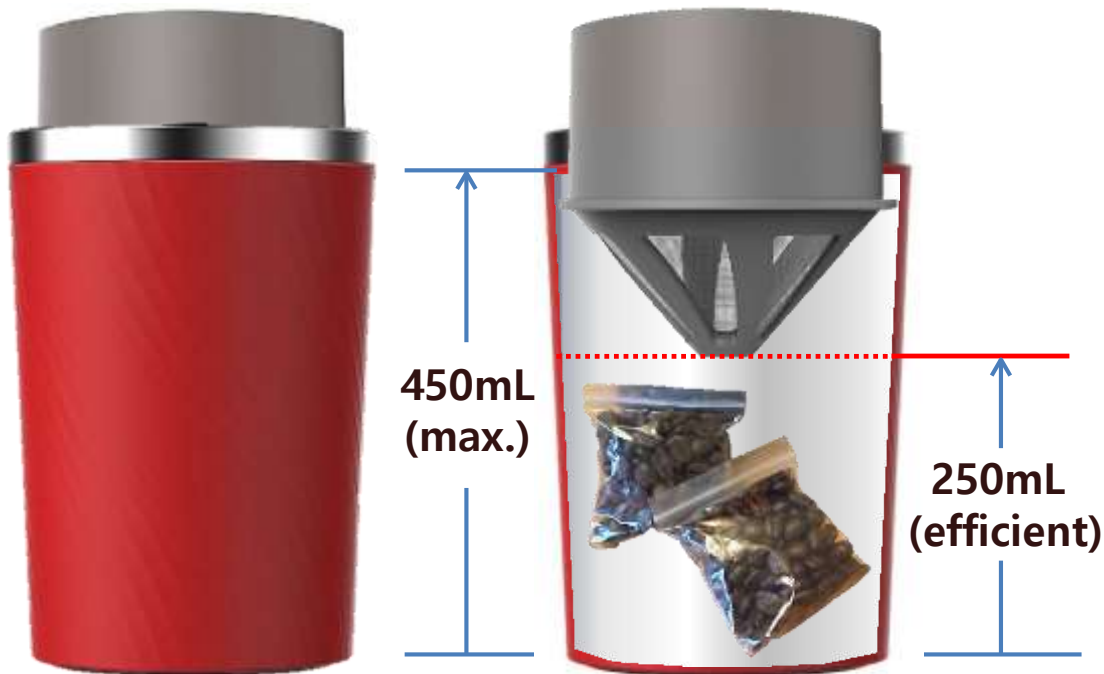


Filter Dripper



Versatile Insulated Tumbler

- Carry 2 to 3 small packs (20g each) of coffee beans, paper filter, and napkin to carry to carry



Easy Cleaning of Etched Stainless Filter

- Cleaning filter with 1 cup of tap water in a few seconds right after brewing



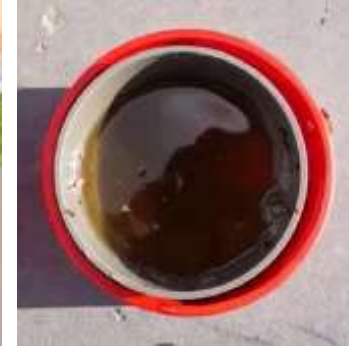
Wet grounds
After brewing



Trash out the
grounds



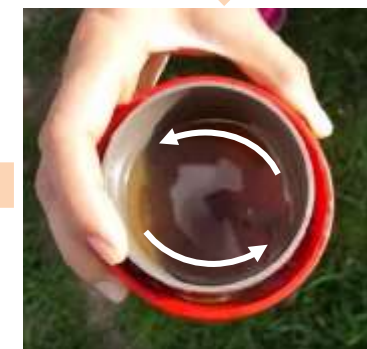
Put it back into Drip Kettle and
Fill up with 1 cup of tap water



Find the filter
perfectly cleaned
for next cups



Gently pour
down while water
is being swirled



Swirl a couple
of times

Using Paper Filter

- Use paper filters for outdoor use only (when no water available to clean)
- One sheet of paper towel needed to wipe out liquid for next cups ready



Cafflano®

FOR GREAT COFFEE



@cafflano



@cafflano.official



cafflano.com

sales@cafflano.com